

# nashuatec

TOTAL DOCUMENT SOLUTIONS



## DX 4640<sup>PD</sup>



ULTRA-FAST, UNINTERRUPTED  
DOUBLE-SIDED PRINTING

## Reduce costs with the DX 4640<sub>PD</sub>, the world's first double-sided CopyPrinter

For high-volume users wanting to accelerate print production and reduce costs, the Nashuatec DX 4640<sub>PD</sub> CopyPrinter is a clear winner. This innovative product boosts productivity, enabling you to print both sides of an A4 page in a single pass, at an ultra-fast 240 prints per minute (ppm). It saves time and money by making high-volume, double-sided printing a simple, continuous process. The network-ready DX 4640<sub>PD</sub>'s flexible paper handling and advanced High Quality system give you the power to print outstanding quality documents on a variety of paper stocks up to A3 size. User-friendly and simple to operate, it offers the convenience of either desktop network printing or easy walk-up access.

The fast, affordable DX 4640<sub>PD</sub> significantly relieves pressure in high-volume environments. It improves efficiency and profitability with extremely rapid, single-pass printing of double-sided documents, at a lower cost than other high-output multifunctional devices.



*Nashuatec's unique approach, links people with knowledge and expertise, combining our wide experience of innovative, document related Products and Software Solutions with our world class Business and Professional Services to deliver the best Total Document Solutions for your business.*



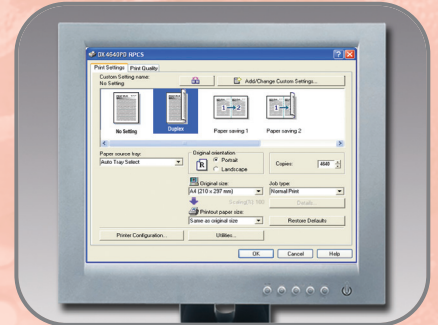
Extremely fast, automatic double-sided printing boosts high-volume productivity



Continuous uninterrupted high-volume printing with the optional large capacity system



Print documents in your preferred format with the easy-to-use RPCS printer driver



#### Ultra-fast, automatic double-sided printing

The Nashuatec DX 4640<sub>PD</sub> CopyPrinter is a breakthrough for busy departments and high volume environments with a regular need for fast, automatic double-sided printing. Now Operators can accelerate throughput and relieve pressure on other devices, by transferring longer print runs to the ultra-fast DX 4640<sub>PD</sub>.

#### Increase high-volume productivity

More jobs can now be processed in less time. The revolutionary DX 4640<sub>PD</sub> boosts print-room productivity with cost-efficient double-sided printing at an amazing 240 prints per minute (ppm). For uninterrupted high-volume printing, a massive 3,000 sheets can be handled via the optional large capacity system.

#### Low-cost, high-volume printing

The cost-saving benefits of double-sided printing become instantly available at high-volume with the DX 4640<sub>PD</sub>. You can quickly save up to 50% of your paper costs, and double-sided jobs can be handled faster and more profitably with easy, single-pass printing.

#### Create impact with spot colour

Vivid spot colour can easily be added to your documents with the optional colour drum units. The DX 4640<sub>PD</sub> can print at high speed on a variety of paper weights and sizes, plus single-sided A3 printing at a rapid 120ppm. It offers users the flexibility to produce a wider range of colour-enhanced documents including newsletters, posters, menus, tickets and price lists, quickly and cost effectively at high volume.

#### Simple, effortless printing

The quick-start touch screen provides access to all key functions, making everyday operation extremely easy. Seamless integration into your existing document environment is straightforward with the network-ready DX 4640<sub>PD</sub>. Nashuatec's RPCS printer driver makes printing intuitive and effortless. Simply click on an icon to print previously saved or common output settings, such as double-sided or 2-Up, in one command. In addition, an optional embedded Hard Disk Drive offers a document library for instant recall of frequently used jobs, such as expense forms or letterheads.

#### Superb, consistent print quality

You can rely on the DX 4640<sub>PD</sub> to deliver outstanding quality day after day. Nashuatec's innovative High Quality system combines advanced master and ink technology with Automatic Pressure Control to balance ink density on every page, however challenging the operating conditions. It ensures professional looking output with crisp, flawless text and clean sharp imaging every time.

#### In Harmony with the Environment

Our products are designed to be kinder to the environment. We are committed to developing technologies that conserve energy and help prevent global warming. Our aim is to reduce the impact on the global environment, whilst continuing to enhance user comfort levels. The DX 4640<sub>PD</sub>'s double-sided printing saves paper and uses less power by printing both sides of the sheet in a single pass.

#### Outstanding Software and Services

Improving productivity, workflow efficiency and cost control is easy with Nashuatec. Designed to add value and ensure our devices operate seamlessly and reliably, we cover every aspect of your business from document management, network control and consultancy, to training and unrivalled support.

## Printer

### Printer language

Standard: RPCS  
Option: Adobe PostScript 3

### Interface

Standard: USB2.0  
Ethernet 10 base-T/100 base-TX  
Option: Bi-directional IEEE1284  
Wireless LAN (IEEE802.11b)

### Memory

Standard: 128MB (64MB resident + 64MB additional memory)  
Maximum: 320MB (with optional 128/256MB)

### Network protocol

TCP/IP, IPX/SPX, Net BEUI, AppleTalk

### Supported Environments

Windows 95/98/Me/NT4.0/2000/XP/Server 2003  
Macintosh 8.6 - 9.X (OS X Classic)<sup>1</sup>  
Macintosh X (10.1 - 10.4) (native mode)<sup>1</sup>

## General

### Printing process

Digital, press roller system, printer controller built-in

### Originals

Sheets/Books

### Original size

Platen Glass: Maximum: 300 x 432mm  
ARDF: A5 - A3

### Print paper size

Simplex: Minimum: 70 x 148mm  
Maximum: 325 x 447mm  
Duplex: 210 x 297mm (A4)

### Print paper weight

Simplex: 47 - 210g/m<sup>2</sup>  
Duplex: 64 - 105g/m<sup>2</sup>

### Maximum print area

Simplex: 290 x 410mm  
Duplex: 290 x 200mm

### Print speed

Simplex:  
60 - 135 prints per minute (ppm) B4 and below  
60 - 120 prints per minute (ppm) A3  
Duplex:  
120 - 240 prints per minute (ppm) A4

### First print speed

Simplex: 12 seconds (A4)  
Duplex: 46 seconds (A4)

### Resolution

Scanning: 600 x 400dpi  
Printing: 400 x 400dpi

### Image modes

Letter, photo, letter/photo, tint and pencil

### Image position

Vertical: Simplex: ± 15mm  
Duplex: ± 7.5mm  
Horizontal: ± 10mm  
Minimum movable unit: 0.25mm

### Reproduction ratios

50 - 200% (in 1% steps)

### Colour printing

By using optional colour drum unit

### Paper feed/delivery table capacity

1,000 sheets (80g/m<sup>2</sup>)

### Power source

220 - 240V, 50/60Hz

### Power consumption

Maximum:  
Simplex: Master making: 340W  
Printing: 305W (at 135ppm)  
Duplex: Master making: 430W  
Printing: 385W (at 240ppm)  
Energy saver mode: Less than 7W

### Dimensions (W x D x H)

With platen cover:  
1,420 x 720 x 1,020mm  
With ARDF:  
1,420 x 720 x 1,130mm

### Weight

With platen cover: Less than 118.5kg  
With ARDF: Less than 126.5kg

## Added Value Features

Combine/Image Repeat Mode, Margin Erase, User Codes, Confidential/Security Mode, Auto and Directional Magnification, Overlay Mode, Programme Mode, Class/Memory Mode, Makeup Function, Auto Density Control, Auto Shut Off Mode, A4 master cut with A3 drum and Skip Feed for Simplex Printing

## High Volume Production Option

### LS3000R - Large Capacity System

Configuration: Large capacity input tray & large capacity output tray

### Paper feed/delivery tray capacity

3,000 sheets (80g/m<sup>2</sup>)

### Print paper size

Minimum: 110 x 180mm  
Maximum: 325 x 447mm

### Print paper weights

47 - 210g/m<sup>2</sup>

## Other Options

- TC-IIR - Twin Colour Printing System
- 50 sheet Auto Reverse Document Feeder
- Colour Drum Units
- 40GB Hard Disk Drive
- 128/256MB memory
- Cabinet
- Tape dispenser

<sup>1</sup> Adobe PostScript 3 option required.

Company management systems applied during the manufacturing of all Nashuatec products conform to ISO9001 quality and ISO14001 environmental management standards.

As an ENERGY STAR Program Participant, Nashuatec has determined that this product meets the ENERGY STAR guidelines for energy efficiency.

In compliance with EU RoHS directive (RoHS: Restriction of Hazardous Substances).

We reserve the right to make amendments to the technical specifications and external appearance of this equipment. Please note that the full range of machines and options shown in this publication may not always be available. All brand and product names are recognized and hereby acknowledged, as registered trademarks of their respective owners.



Adobe PostScript<sup>®</sup> 3



Our earth,  
Our tomorrow



@Remote  
Intelligent Remote Management System



NOX4640PD0081

**nashuatec**

Part of the NRG group

[www.nashuatec.com](http://www.nashuatec.com)

